

Hi, just a reminder that you're receiving this email because you signed up for the Tino e-newsletter at your church or other event when Rev. Tino spoke. If you no longer want to get this newsletter, PLEASE DO NOT MARK THIS AS SPAM! Simply click the "unsubscribe" link. Thanks!

You may [unsubscribe](#) if you no longer wish to receive our emails.



To the Ends of the Earth

CHILE MISSION NEWS FROM JIM AND LIISA TINO

May 2018

In This Issue: Show your Colors!

[Fun Fact!](#)

[Prayers and Praise](#)

[Coffee and Conversation](#)

[Ministry Update](#)

[Music Therapy!](#)

[Baby \(and family\) Update!](#)

Our Mailing Address



If you are planning to mail us something (or visit us!), our address is:

James y Liisa Tino
Las Nevadas 2988
Providencia
Santiago, R.M.
Chile

Quick Links

+ [Tino web page](#) (blog, photos, prayer requests)

+ [Support Corner](#)

Greetings!

"Sir, ", the woman said, "I can see that you are a prophet." (John 4:19)

We recently celebrated Pentecost Sunday, and I encouraged



everyone to wear something red to church. Red is the traditional Pentecost color. (I wore a flaming red clerical!) I got to thinking about how the things we wear can identify us. Gangs wear their "colors"; youth tend to dress according to their cliques. When Jesus met the woman at the well in Samaria, she figured out that he was a man of God. How did she know Jesus was a "religious guy"? More to the point, how will the people around you know that you are a "religious guy"? What do we

"wear" that identifies us as Jesus-followers? A smile, a kind word, a willingness to listen, a shared Scripture verse, a word of prayer, a helping hand - these things are our "colors". Let's make it clear to others that we follow Jesus!



Coffee and Conversation, anyone?

In the month of April, we began offering two evenings of English classes each week at our mission in the Providencia neighborhood of Santiago.

Not only have several church members taken advantage of this opportunity, but it's an easy way to invite friends to our mission house. In total we've had about 14 people participate and two of the new contacts have come to Sunday worship as well! The classes are practical and dynamic and always

Forward to a Friend

Like us on Facebook



THRIVENT CHOICE®
ENROLLED
ORGANIZATION [Learn More](#)

Hey Thrivent Members!

Choice Dollars charitable grant funds make a world of difference to missionaries through our

Global Missionary Fund, which supplies dollars to missionaries who experience a shortfall in funding.

Directing Choice Dollars is easy. Simply go to:

Thrivent.com/thriventchoice to learn more and find program terms and conditions. Or call 800-847-4836 and say "Thrivent Choice" after the prompt.

Fun Fact: It's Olive Time!



Olives are traditionally associated with the Mediterranean. However, when the Spanish came to South America they introduced this species to the New World. Today it flourishes in Peru, parts of Argentina, and Chile! There are many varieties of olives - some are suited for the table, others for pressing into cherished olive oil. Throughout history the olive has come to symbolize wisdom, peace, power and even purity. Autumn begins the

include a Bible story that we read aloud and discuss. The classes also give Liisa and Jim a chance to show their "colors" we share the teaching, and Liisa also loves to host! With so many people in Santiago wanting to learn English, it seems like a natural way to connect.



One of our English Club participants



Ministry Update

We continue to work at our new church planting ministry in Santiago. We are about 8 months into it now, and have a core group of close to 20 people! Praise God! We are now starting to plan out some "next steps", which might include renting a new location for the church (the church currently meets in our house). We also continue with the immigrant ministry, providing temporary lodging, orientation, and some home furnishings when our "guests" move on to their own living quarters.



Sunday morning worship

harvest season for olives (we are in autumn here). You can't just pluck an olive from a branch and pop it in your mouth. Yuck! The bitterness needs to be extracted via a process using lye or brine. To find more about the curing process for olives, [click here!](#)

Prayers & Praise

* **Praise God for the new contacts that we have made** through English classes. Pray that they will grow in the faith.

* **Pray for Carolina and Soldany** as they study the catechism. Pray that others will desire to learn more about Jesus through the Bible and the teachings of the Lutheran church.

* **Ask God to continue to bless the project "Medicine for Venezuela"** so that many can be comforted and receive the much needed medical assistance. Pray for the country of Venezuela and the Lutheran leaders that share the love of Jesus.

* **We praise God for the new GLO missionaries serving around the world.** Especially pray for the new missionaries being sent: the Farrows, the Karths, the Tshiwakas, the Venturas and Ben!

* **Pray that the Lord would guide Jim in his 2 jobs:** missionary to Chile and Director of Global Lutheran Outreach. It is more than one person can do, but we trust God's direction and provision.

* **Pray for our daughter, Sonrisa, and husband Tyler** as they prepare to be parents. Pray also for the new baby!

* **Thank the Lord for the dedicated core members** we have in the new Santiago mission. Pray that



Music Therapy!



Liisa leading music therapy for rehabilitation. The class size averages 4 students between the ages of 25 and 55. Through activities with rhythm instruments, handbells and using a variety of musical styles, the

participants express themselves and enjoy creating their own music! They have written lyrics to their own songs, they do improvisation on their instrument of choice and are



currently preparing for a presentation of Chilean folk music - perhaps even including dancing! This will be a challenge since most of them are wheelchair-bound.

Jim leading devotions at Casa Betesda



Baby (and family) Update!

You all probably know we have 2 grandchildren, thanks to Gabriela and Daniel, living in Phoenix. By the time you are reading this, we will likely have welcomed our third grandchild! (you can get the latest news on Liisa's facebook page). For that reason, Liisa is now in Florida with Sonrisa and Tyler awaiting the big day...and helping out where she can! Please pray for Soni as she looks to be in labor soon. Also, pray for them at the recent passing of Ty's father who was fighting cancer. AND give thanks that Ty was recently recognized for his dedication and hard work and was promoted to supervisor at his job!



Soni and Ty

Nika just entered the final stage of her graduate degree as a Chiropractic doctor. That means she is doing clinicals - seeing patients! We are proud of her and pray that Lord willing, she will graduate next year from Logan University in St. Louis.

the church would grow and be able to find a better permanent location .

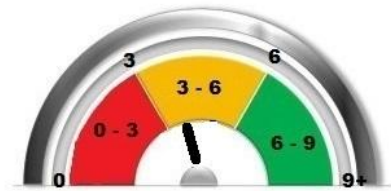
*** Ask God to heal Natanael,** the 14 year old son of our co-workers in Santiago, as he recovers from a serious surgery on his leg in April. Pray that God would guide the doctors and strengthen the family.

Ben just finished a month of language school in Guatemala where he brushed up on his Spanish. Jim went to Guatemala in early May to visit Ben and two other GLO missionaries who are there. Now Ben is getting set up in Zacapa where he will serve as a music missionary. Besides leading worship, he will be teaching children and youth to play a variety of instruments, and to be the future music leaders in their congregations.

SUPPORT CORNER

We praise God for each of you, our "mission partners". In addition to providing our living expenses, your financial contributions also support our immigrant ministry in Santiago, which is growing!

Financial Support Level



Months of ministry funding currently on hand: **4.0**

To support our ministry online, go

to <http://www.globallutheranoutreach.com/support-tino.html>. One-time or automated contributions are available.

OR

Mail a check to:

Global Lutheran Outreach

6709 Ficus Dr.

Miramar, FL

(Put "Tino - Chile" on the memo line of the check.)

Global Lutheran Outreach is a 501 (c) 3 tax-exempt organization. All contributions are tax-deductible to the fullest extent allowed by the Internal Revenue Service.

