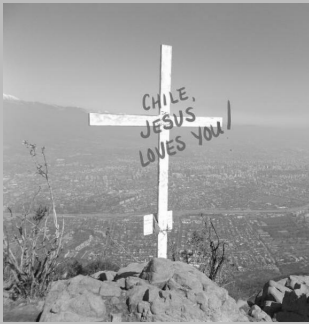


Hi, just a reminder that you're receiving this email because you signed up for the Tino e-newsletter at your church or other event when Rev. Tino spoke. If you no longer want to get this newsletter, PLEASE DO NOT MARK THIS AS SPAM! Simply click the "unsubscribe" link. Thanks!

You may [unsubscribe](#) if you no longer wish to receive our emails.



To the Ends of the Earth

Chile Mission News from Jim and Liisa Tino

November 2018

Greetings!

In Chile as in the USA, the activity level ramps up as we approach the holidays! Here in the southern hemisphere, November marks the end of the school year - and of course, Christmas is around the corner. The pace of our ministry accelerates as well, sometimes leaving us a bit breathless.

Although Thanksgiving is not celebrated in Chile, our hearts are filled with gratitude to you, our mission partners, but especially to our Lord and Savior who gave Himself for us, and for everyone. How can we be anything but thankful?

*I will give thanks to you, LORD, with all my heart; I will tell of all your wonderful deeds.
(Psalm 9:1)*

As you know, our mission in the Providencia neighborhood of Santiago is a "house church" style of ministry - we live at the mission house, which is also the center of our ministry activities. So, what has been going on at the "mission house"? LOTS!

Our "medicine for Venezuela" project continues. In our fourth shipment, (we average 2 shipments/year), over 630 people received a month's supply of necessary medications. Since our mission congregation is mostly Venezuelan immigrants, we have many enthusiastic volunteers who help to sort and pack all the medicines, which are distributed in Venezuela through the network of Lutheran congregations.

If you want to help make sure that this important "ministry of mercy" continues or to learn more about it, [click here](#).



Most recent purchase of medicines, waiting to be sorted, packed and shipped.



Two of the volunteers from our congregation sorting and packing.



Happy to finish the arduous task!

English Club Continues



with 5 new people who have joined in the last month. Liisa enjoys preparing creative lessons to engage students in conversation.

Many have shown interest in learning about the Lord. Pray that God's Spirit moves them to come to church!

New friends are learning about the Bible

Although Jim's responsibilities as director of Global Lutheran Outreach had him traveling "around the world" recently, he continues to teach and evangelize here in Santiago. Please pray for Jorge (from Chile) and Zulu (from Venezuela), both of whom are new to the Christian faith!



The immigrant wave...

... has not slowed down! Currently we have 4 individuals sharing our home. They need your prayers as they are in different stages of the immigration process and beginning new jobs. Our immigrant ministry provides lodging and support here at the mission house. [Click here to learn more or to support our ministry to immigrants!](#)

PRAYERS AND PRAISE

- * Pray for wisdom, as we seek the Lord's guidance for the next steps of our ministry here in Santiago.
- * Pray for the GLO Board of Directors, meeting in Dallas as you read this! (November 13 - 15).
- * Pray for Jim as he "wears two hats" - church planting missionary in Santiago, and director of Global Lutheran Outreach.
- * Pray for our mission congregation as we search for a new (bigger) location that we can afford!

- * Praise God for Jorge, Zulu, and Jesus as they study the Word and prepare for adult confirmation!
- * Praise God our English outreach and for the five new students!
- * Praise God for the growth of our mission congregation, now with 30 members and "friends"!
- * Praise God for the growth of Global Lutheran Outreach, which now has 31 missionaries on four continents!

Support Corner

We praise the Lord especially for YOU, our mission partners - the 30 individuals (including 3 congregations) who give EVERY MONTH, as well as for the many people who support us quarterly or as they are able to do so. May the Lord pour out unexpected blessings on you!

To support our ministry online, click here. One-time or automated contributions are available.

OR

Mail a check to:

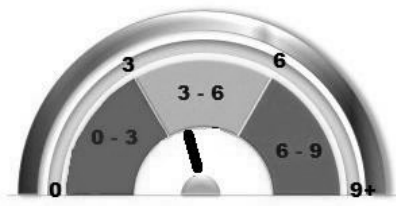
Global Lutheran Outreach

6709 Ficus Dr.

Miramar, FL 33023

(Put "Tino - Chile" on the memo line of the check.)

Financial Support Level



Months of ministry funding currently on hand: **4.0**

Thanks to YOU, our financial situation has stabilized somewhat since our last newsletter. We are planning to visit our mission partner congregations this February and hope to be able to thank you personally! We will (hopefully) have a schedule planned in time to share it with you in our next newsletter!



THRIVENT CHOICE®
ENROLLED
ORGANIZATION

[Learn More](#)

Hey Thrivent Members!

Choice Dollars charitable grant funds make a world of difference to missionaries through our Global Missionary Fund, which supplies dollars to missionaries who experience a shortfall in funding. Directing Choice Dollars is easy. Simply go to: Thrivent.com/thriventchoice to learn more and find program terms and conditions. Or call 800-847-4836 and say "Thrivent Choice" after the prompt.



Global Lutheran Outreach is a not-for-profit corporation under section 501 c 3 of the Federal Tax code. Contributions are tax deductible to the fullest extent permitted by the IRS.