



# To the Ends of the Earth

## CHILE MISSION NEWS FROM JIM AND LIISA TINO

April 2019

### A whirlwind!

Wow! This month since we have been back in Chile has been a whirlwind of activity! For that reason, we ask your forgiveness in not communicating with you earlier.

So, what has kept us so busy?? Read on to find out!

### In This Issue...

Fun Fact!

Prayers and Praise

Great Gains and Growing Pains!

Immigrant Ministry Continues

ONgoing OUTreach!

### Our Mailing Address



If you are planning to mail us something (or visit us!), our address is:

James y Liisa Tino  
Las Nevadas 2988  
Providencia  
Santiago, R.M.  
Chile

### Quick Links

Dear James,

"...they took the branches of the palm trees..." (John 12:13)

This year on Palm Sunday, we read the account of the Triumphant Entry of Jesus into Jerusalem from the Gospel of John. We usually read it from one of the other Gospels - Matthew, Mark, or Luke. I just realized for the first time that John is the only one who specifically says that the branches were "palm" branches! The other three evangelists simply say "branches". Does it matter that they were palm branches? Probably not so much, but that's how our God is. He is a detailed God.

In our Christian walk, it's pretty easy to feel overlooked or forgotten, lost in the Palm Sunday crowd. But our God is one who comes to us on ground level, noticing the details. Jesus comes into our lives and walks among us, walks with us. He knows you, and He loves you - enough to die for you. That's what Holy Week is all about. It's about a God who loves you enough to give His life for you. That's love!



### Great Gains and Growing Pains!

Our attendance for Sunday worship is now averaging about 30 people! Praise God! We are urgently looking for a larger place to rent. Besides the regular Sunday worship services and activities, Jim recently led a 2-day course as part of our national Lutheran Bible Institute. He also teaches three catechism classes and one intro-to-the-Bible class weekly.



Jim teaches an evangelistic Bible study




Lutheran Bible Institute class

Liisa teaches music therapy and English twice a week at the rehab center, Casa Bethesda ([click here to see some pictures of Casa Beteesda!](#)) She also leads two English classes on week nights. These are turning out to be great opportunities to share the Gospel and to make new contacts for our growing church.

+ [Tino web page](#) (blog, photos, prayer requests)

+ [Support Corner](#)

 Like us on Facebook

**Fun Fact:**  
Something  
smells fishy!



Fish at the market

Since we are in Holy Week, and Chile is "in name" a Catholic country, many observe the practice of NO MEAT EATING during this time of year. Actually, this is not a problem for Chileans since seafood abounds! Remember, Chile has over 4000 miles of coast. When Liisa does her Tuesday "feria" (street-market) shopping, she has her choice from several fish trucks to buy fresh PESCADA (merluza) REINETA (pomfret), JUREL (mackarel) or if she is lucky, the world-famous CURVINA (sea bass). SUSHI, PAELLA, and CEVICHE made from everything from salmon to octopus, is enjoyed daily! Yesterday, Liisa bought some fish at the street market and had it on her cart. When she wasn't looking, someone stole her fish! So, no fish for us this Holy Week!



## Immigrant Ministry continues

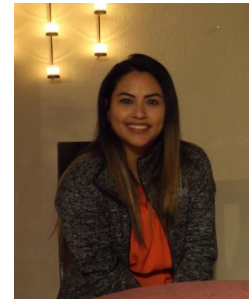
The immigrant ministry keeps us very busy! Every week Jim is contacted by several people who have either just arrived in Chile, or are making plans to immigrate. Currently, our house-church is a "refuge" for 7 different individuals. We would like to introduce them...



(L to R:) Rusbelis,  
Sanderlin, Ruth

**Ruth** is a single mom who lives and works in the home of a different family, but on the weekend comes to our site to spend time with her 2 daughters, who are living with us. **Rusbelis** is her 19 year old daughter on the left, and **Sanderlin** is a first grader. Pray for them as they get their visas in order.

**Yorgelis** has lived with us for 10 months. She finally has her visa and is working at a bakery and saving money to eventually rent an apartment with the friends she has made at our mission, Rusbelis & Sanderlin!



Yorgelis



Cesar, Naylu, and  
Luis David

**Naylu** is a friend from our Barquisimeto days! She came with her family to our Lutheran church in Venezuela as a young girl. Now she is married and moved to Santiago with her husband, **Cesar**. They arrived in Chile 2 months ago- right in time to give birth to their first baby, **Luis David**! Pray that their visas come through quickly and that Cesar finds decent work.

If you are interested in supporting our immigrant ministry in Santiago or learning more about it, [click here](#).



Sunday morning worship. We have expanded into our living room!

## Prayers & Praise

\* **Thank God for the 6 people** learning about Jesus through the "Towards a New Life" Bible study. Pray for Cesar, Naylu, Ruth, Rusbelis, Maricarmen, and Sebastian.

\* **Thank God for the 3 individuals preparing for confirmation.** Pray for Jorge, Carlos, and Zulu.

\* **Praise the Lord** that the attendance at the mission is growing and **pray that we find a larger place** to rent soon!

\***Pray for God's blessing on our current shipment of medicine** to our brothers and sisters in Venezuela. We are thankful for donations in order to purchase the medication, for the volunteers who put in many hours packing the pills, and for God's protection as the shipments travel to their destinations.

\* **We praise God for the opportunity to visit 7 congregations** in the States during February and March.

\* **Thank Jesus for improved health and strength for Nata**, the son of Pastor Cristian & Ethel Rautenberg.

\* **Plea to God for His mercy and justice for the country of Venezuela.**

\* **Pray** that God would continue to use **Global Lutheran Outreach** to share the Hope we have in the Risen Christ all around the world **through the work of our 34 missionaries!**

## → **ONgoing OUTreach and Evangelism!**



Jim leading "cultural adaptation" conference

One evangelism method we use is to offer workshops on a variety of topics. Recently Jim gave a workshop on "How to Adapt to my New Life in Chile". This is about the fourth time we have offered this presentation, and every time God uses it for His purpose. This Sunday a husband and wife from the workshop came to church as well. The participants comment that the insights regarding the difficulties, emotions and challenges of relocating are so pertinent to their situations. We pray that God continues to help us help others!

Liisa continues to evangelize through English classes. Thursday is the beginners group, and Friday is the "English Club" conversational program. Several English students have expressed an interest in learning more about the faith!



English Club rocks!

Several English students have expressed an interest in learning more about the faith!

## SUPPORT CORNER

We praise God for each of you, our "mission partners". In addition to providing our living expenses, your financial contributions have also been supporting our growing immigrant ministry in Santiago!

[To support our ministry online, click here.](#) One-time or automated contributions are available.

OR

### Mail a check to:

Global Lutheran Outreach  
6709 Ficus Dr.  
Miramar, FL

(Put "Tino - Chile" on the memo line of the check.)

### Financial Support Level



Months of ministry funding currently on hand: **4.0**

## Hey Thrivent Members!

Choice Dollars charitable grant funds make a world of difference to missionaries through our

**Global Missionary Fund**, which supplies dollars to missionaries who experience a shortfall in funding.

Directing Choice Dollars is easy. Simply go to:

[Thrivent.com/thriventchoice](http://Thrivent.com/thriventchoice) to learn more and find program terms and conditions. Or call 800-847-4836 and say "Thrivent Choice" after the prompt.



THRIVENT CHOICE®  
ENROLLED ORGANIZATION [Learn More](#)

Global Lutheran Outreach is a 501 (c) 3 tax-exempt organization. All contributions are tax-deductible to the fullest extent allowed by the Internal Revenue Service.



Global Lutheran Outreach | 6709 Ficus Drive | Miramar | FL | 33023